

Patternmaker

100% Virgin Wool | 4 Designs



camira



Using state-of-the-art digital printing technology and created in collaboration with renowned textile designer, Kate Lawrie, Patternmaker's four contemporary designs, Crosshatch, Dot Dash, Hula and Speckle, are brought to life on our 100% pure new wool felted fabric. Blending sustainability with style, Patternmaker's cool-toned greys, warm honey-browns, rich earthy terracotta shades and restorative green and blue hues inject pattern and personality into hospitality, commercial and residential settings.

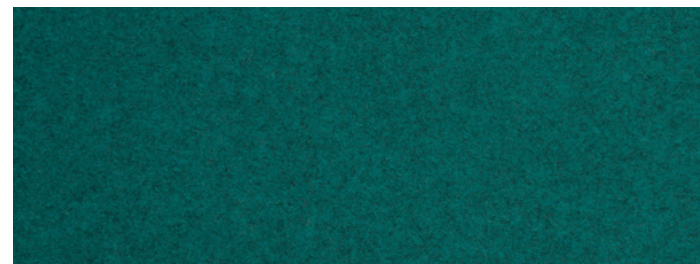


Dot Dash

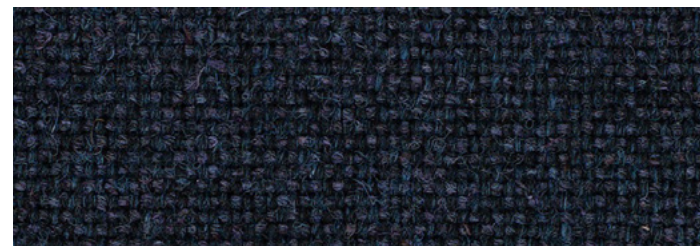
PMD12



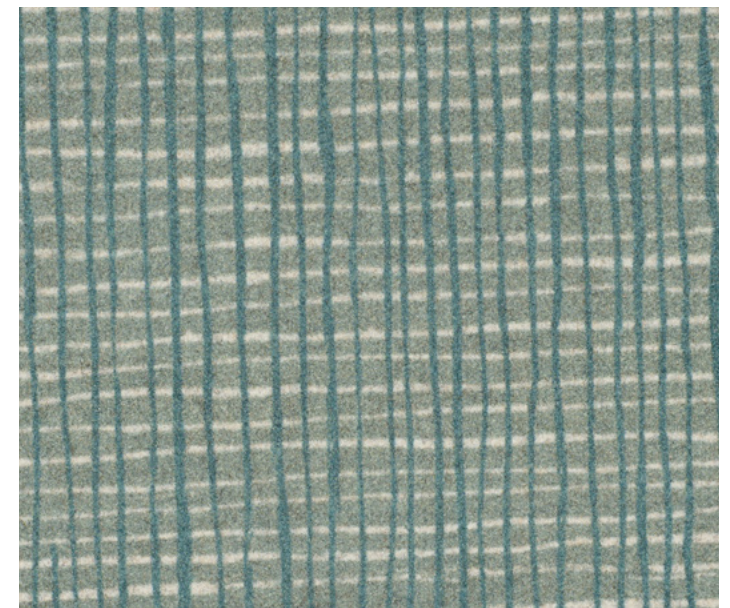
Crosshatch
PMC14



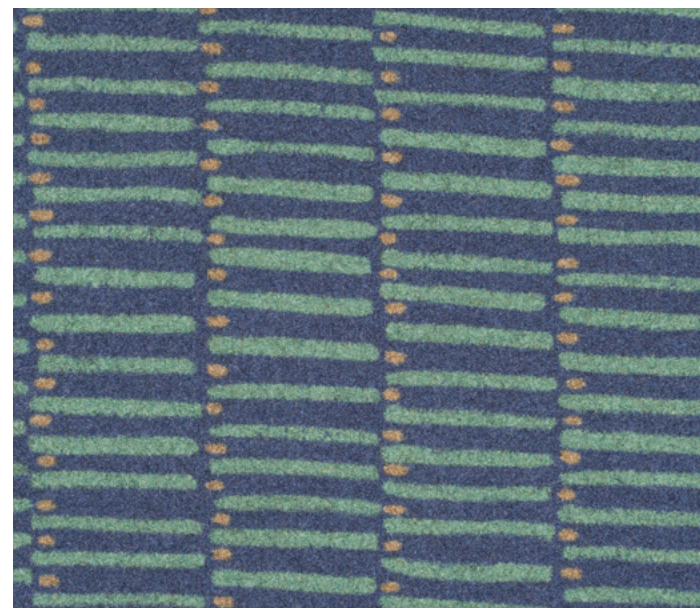
Blazer
Bodmin, CUZ4F



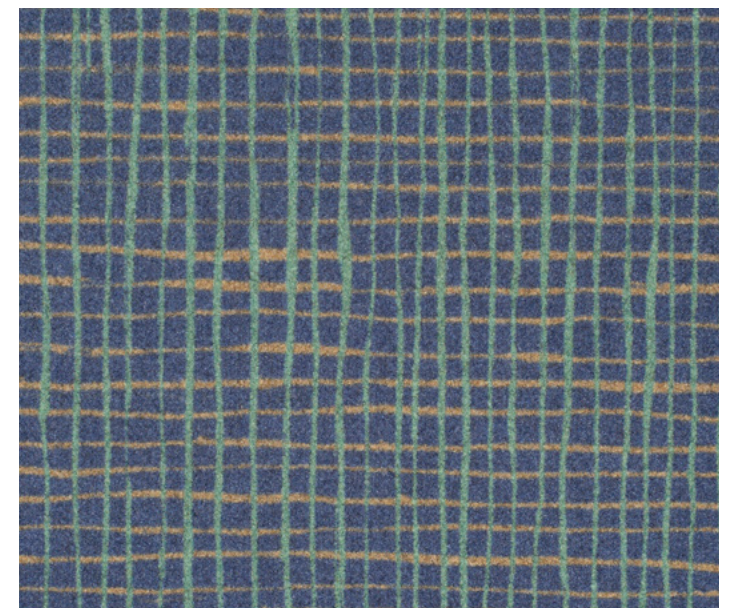
Main Line Flax
Tower, MLF36



Crosshatch
PMC15



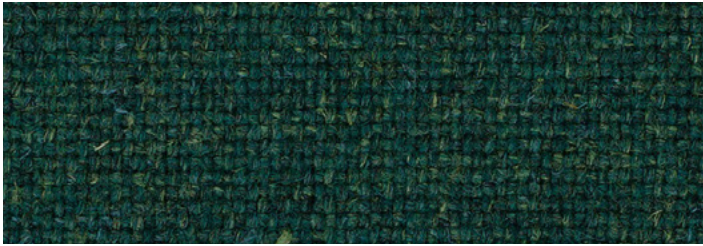
Dot Dash
PMD13



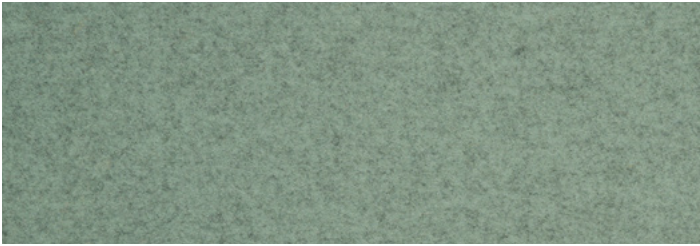
Crosshatch
PMC13



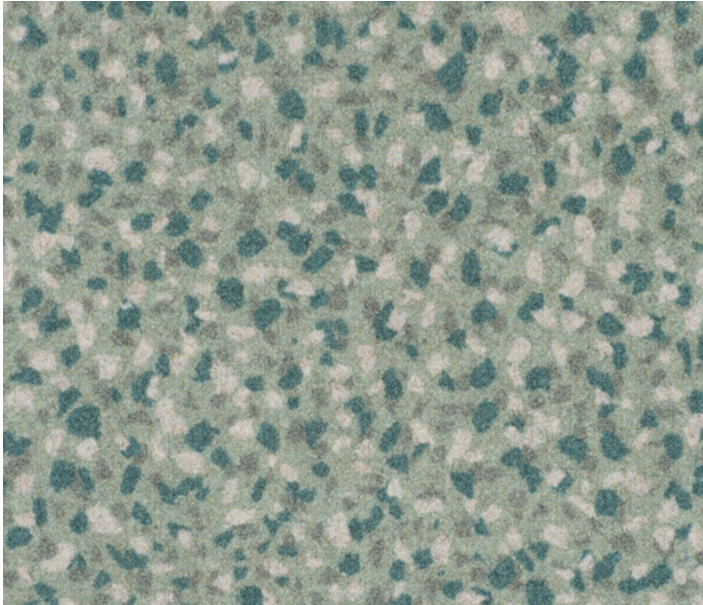
Hula
PMH07



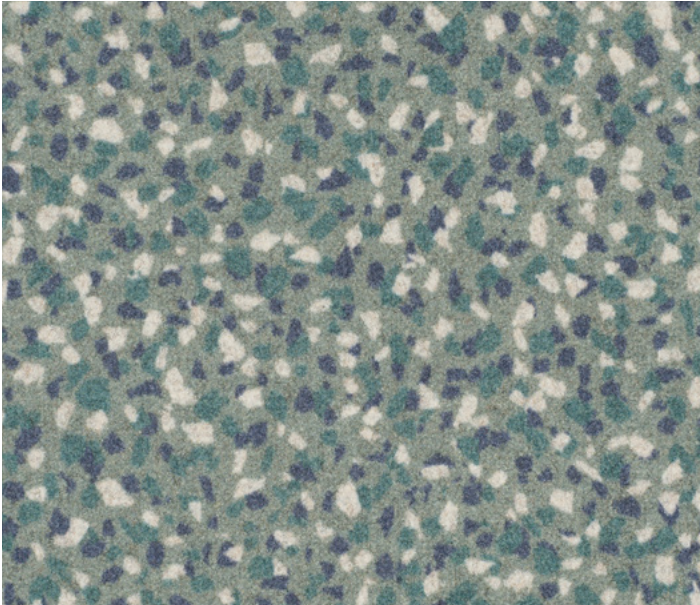
Main Line Flax
Hornchurch, MLF55



Blazer
Moray, CUZ4K



Speckle
PMS12



Speckle
PMS13

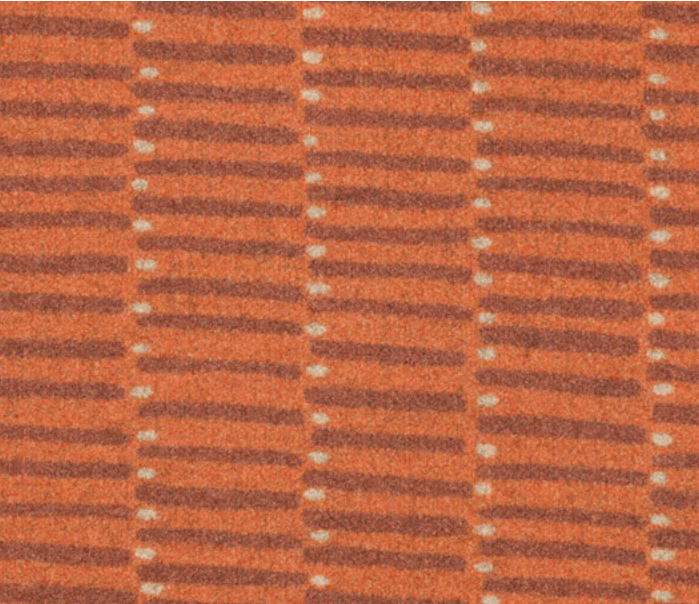




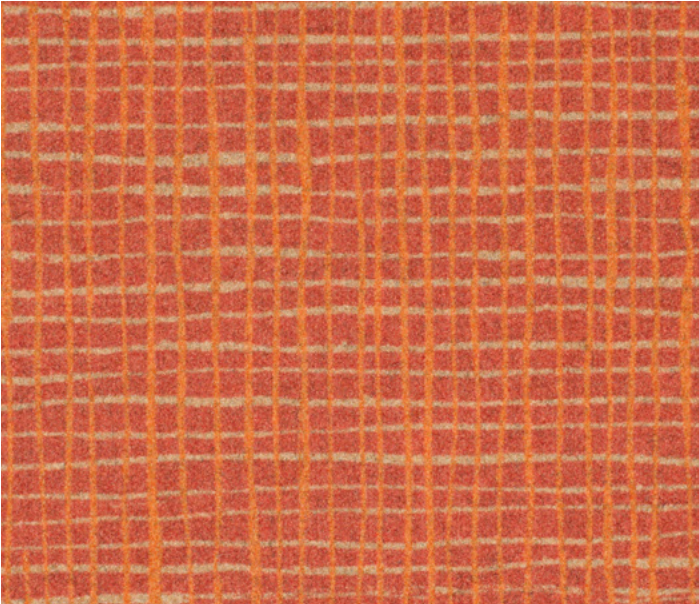
Dot Dash
PMD15



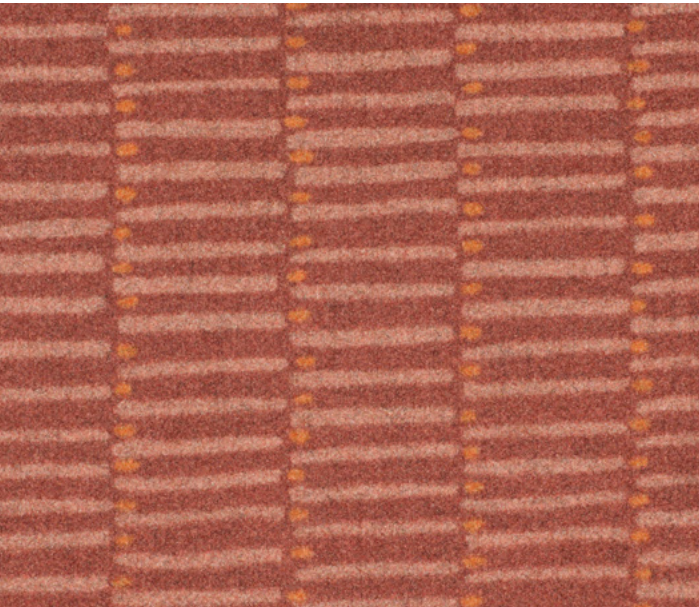
Crosshatch
PMC18



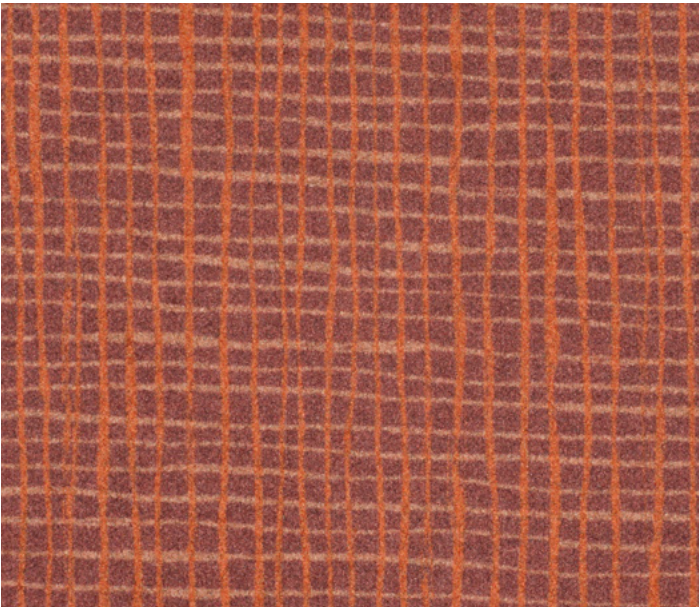
Dot Dash
PMD16



Crosshatch
PMC17



Dot Dash
PMD14

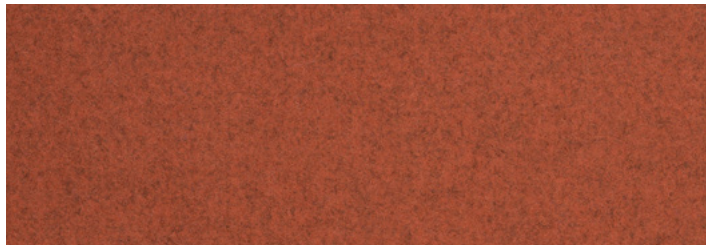


Crosshatch
PMC16



Hula

PMH08



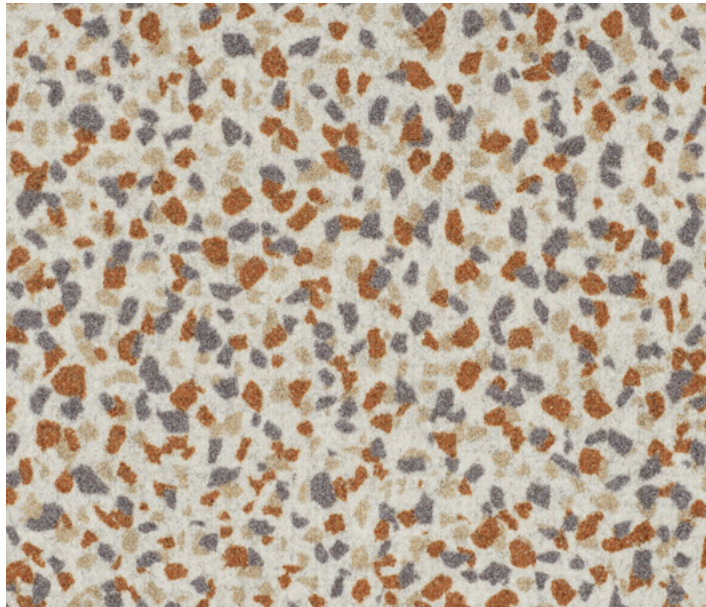
Blazer

Warwick, CUZ4L



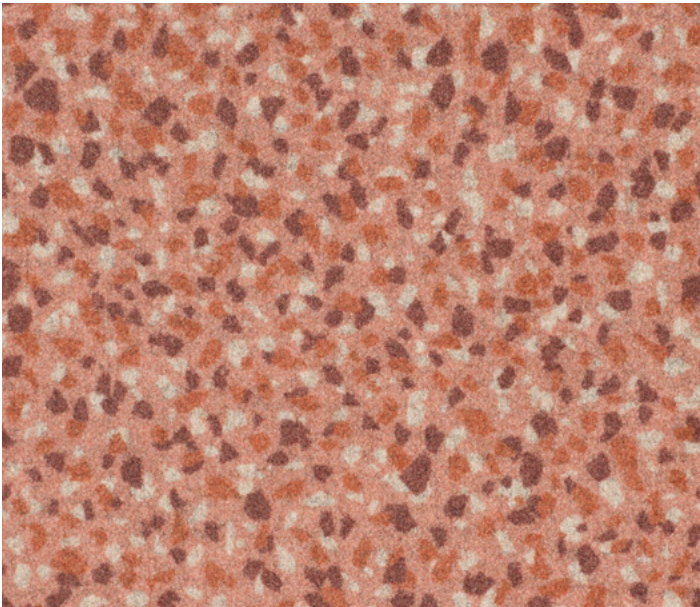
Main Line Flax

Morden, MLF12



Speckle

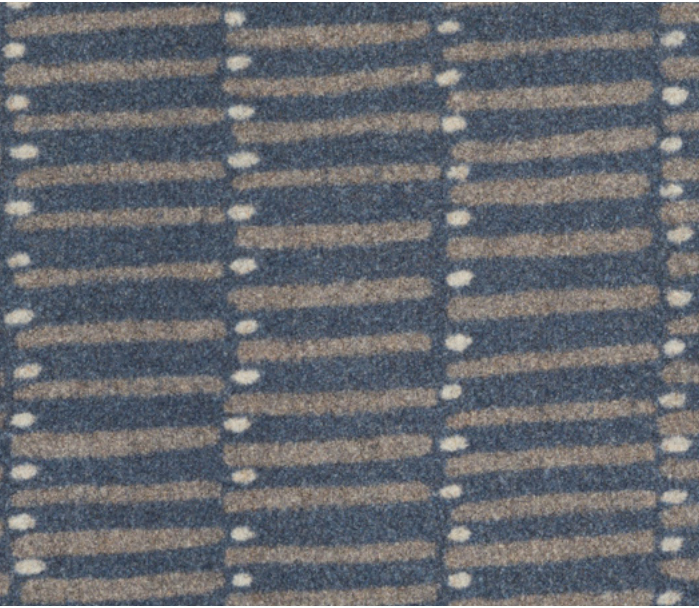
PMS14



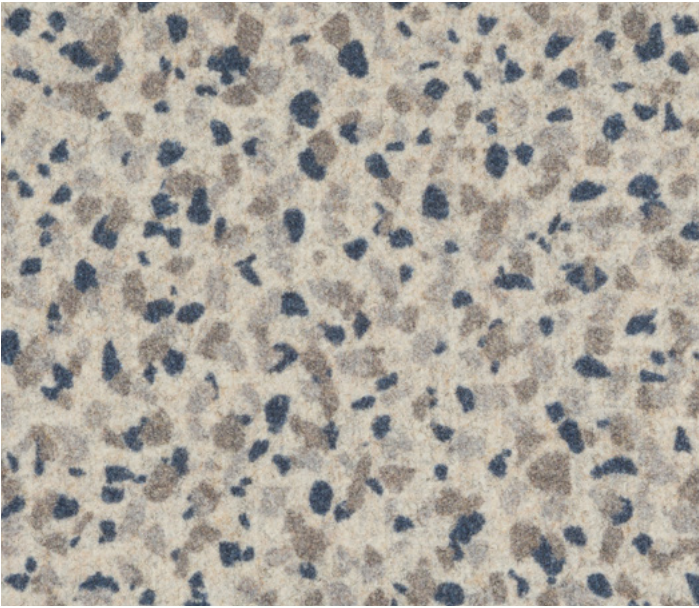
Speckle

PMS15





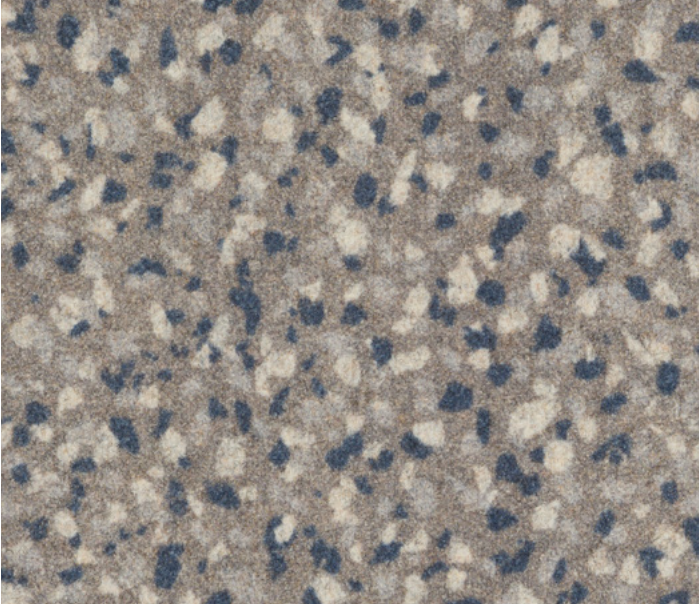
Dot Dash
PMD07



Speckle
PMS07



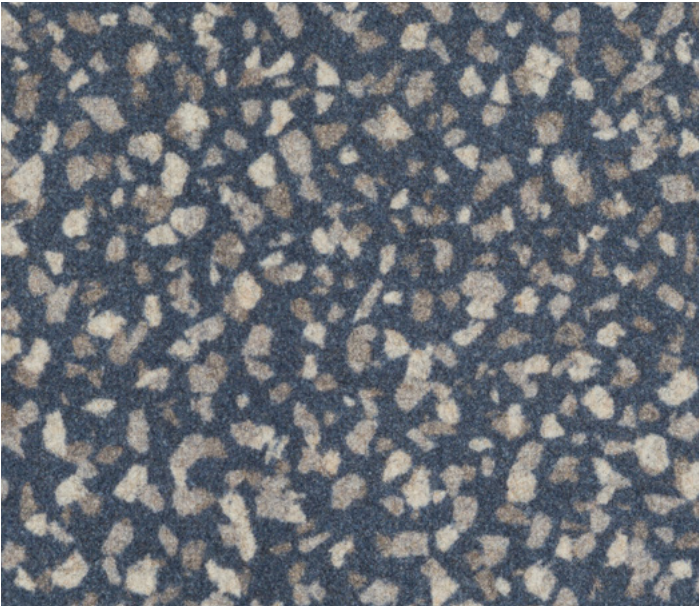
Dot Dash
PMD09



Speckle
PMS08



Dot Dash
PMD08



Speckle
PMS09



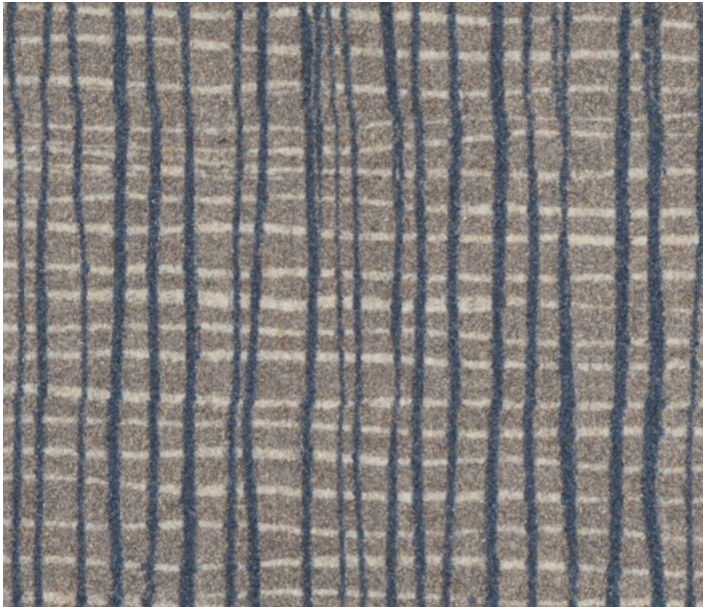
Hula
PMH04



Blazer
Newcastle, CUZ1W



Main Line Flax
Redbridge, MLF61



Crosshatch
PMC08

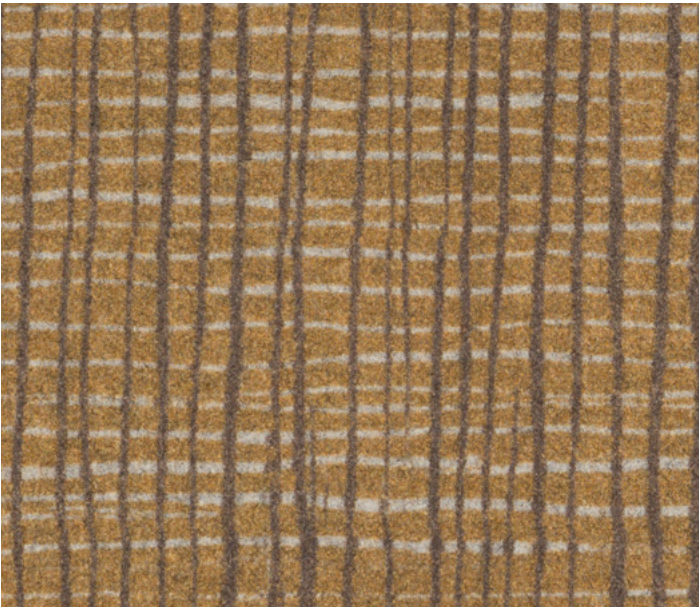


Crosshatch
PMC09





Dot Dash
PMD07



Crosshatch
PMC12



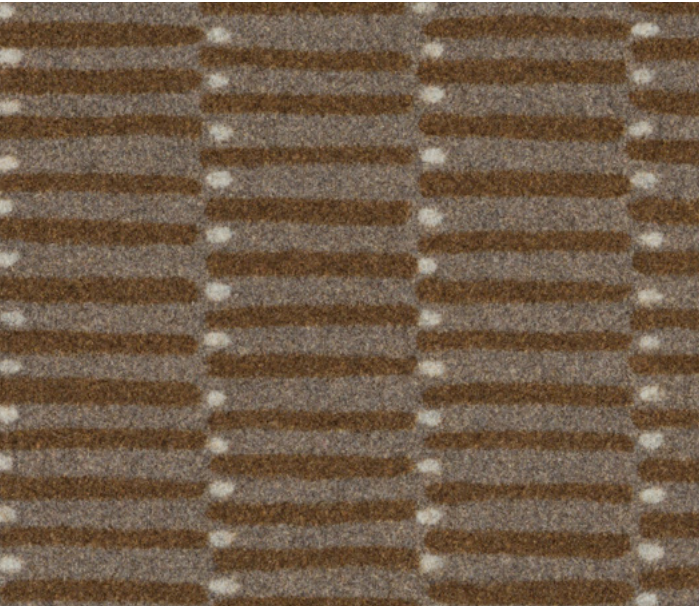
Blazer
Surrey, CUZ1E



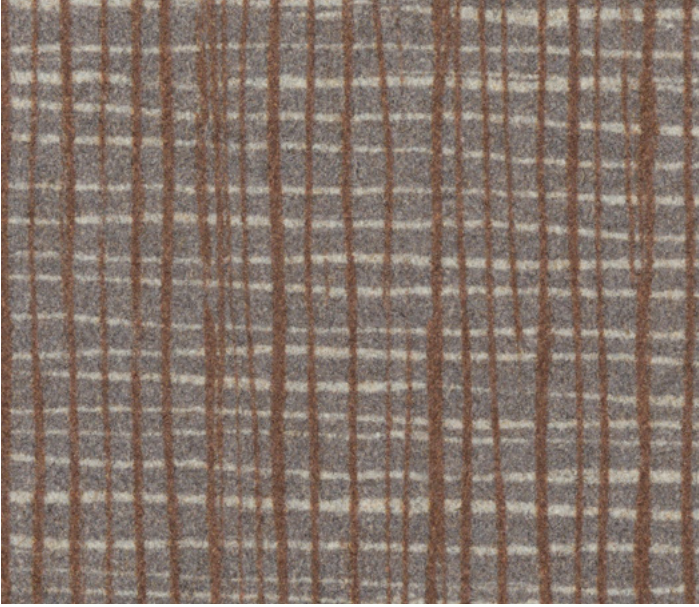
Main Line Flax
Bank, MLF23



Crosshatch
PMC11



Dot Dash
PMD08



Crosshatch
PMC10



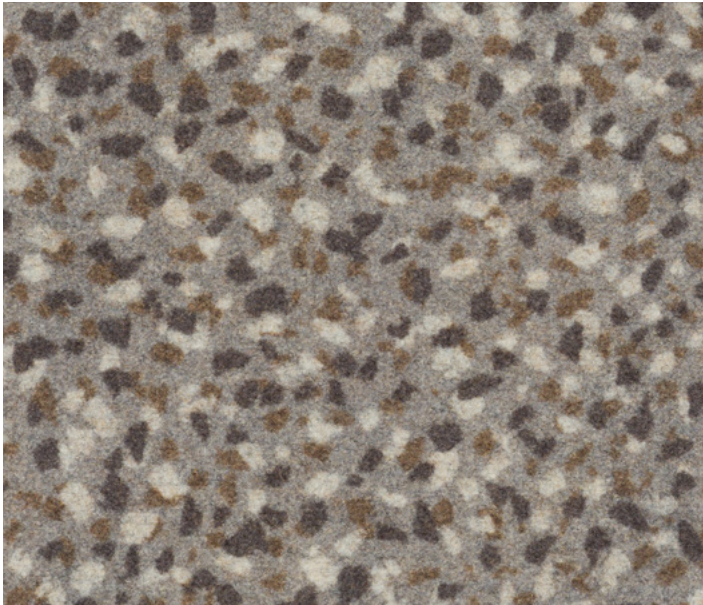
Hula
PMH05



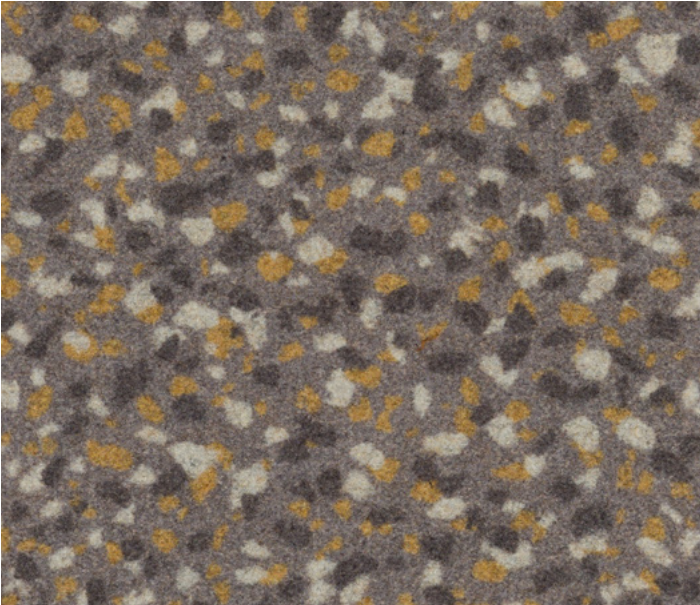
Blazer
Trevelyan, CUZ31



Main Line Flax
Morden, MLF12



Speckle
PMS11



Speckle
PMS10




Lynn Kingdon and Kate Lawrie – in conversation


Camira's Head of Creative, Lynn Kingdon, and textile artist and designer, Kate Lawrie, have worked in tandem to portray the best of woven and digital print in Patternmaker. Click the button below to hear them in conversation together, exploring the design themes which inspire the four designs and how these have been translated through innovation in digital print on wool.


 [Watch Here](#)





Patternmaker



Task seating



Soft seating


Panels



Cigarette & Match



IMO FTP Code


Acoustic


Year guarantee

With Treatment


Curtains


Medium Hazard

Technical Information - Q217

Composition
100% Virgin Wool

Environment
Certified to the EU Ecolabel
Certified to Indoor Advantage™ Gold

Width
140 cm minimum

Weight
460 g/m² ±5% (644 g/lin.m ±5%)

Pattern Repeat
PMC: Width: 140 cm, Length: 135 cm ±5%
PMD: Width: 140 cm, Length: 43 cm ±5%
PMH: Width: 140 cm, Length: 64 cm ±5%
PMS: Width: 140 cm, Length: 78.5 cm ±5%

Abrasion Resistance*
Heavy duty / 5 year guarantee
Independently certified to ≥45,000 Martindale cycles

Light Fastness
5 (ISO 105 - B02)

Fastness to Rubbing
Wet: 4, Dry: 4 (ISO 105 - X12)

Acoustic Properties
Acoustically transparent. Acoustic graphs available upon request.

Cleaning
Vacuum regularly. Wipe with a damp cloth using a proprietary upholstery shampoo/soap. For deeper cleaning use steam or professionally dry clean. Full details can be found in our cleaning and disinfection guide.

Flammability
EN 1021 - 1 (cigarette)
EN 1021 - 2 (match)
BS 7176 Low Hazard
NF D 60-013
ÖNORM B 3825 & A 3800-1 (over CMHR 58kg/m³ Foam)
UNI 9175 Classe 1 IM
EN 13501-1 Adhered Class C, s1, d0
IMO FTP Code (Part 8)
The Furniture and Furnishing (Fire Safety) Regulations 1988 (UK domestic cigarette and match)
California Technical Bulletin 117
NFPA 260 + UFAC Class 1
ASTM E84 Class 1 or A (Adhered)
ASTM E84 Class 2 or B (Un-adhered)
With NitroPhlam365:
BS 5852 Ignition Source 5
BS 7176 Medium Hazard
With FR Treatment (Z):
EN 13501-1 Adhered Class B, s1, d0
With FR Treatment (Gorts):
BS 5867-2: Type B Curtains & Drapes
IMO FTP Code (Part 7)
ASTM E84 Class 1 or A (Un-adhered)
NFPA 701
Note: Flammability performance is dependent on components used. Our certificates show what substrates have been used in our tests. For composite tests customers must ensure their complete furniture meets the necessary standards.

*Abrasion testing produces a wide variability of results even from the same test sample. The independent certificate of ≥45,000 cycles is available on our website or from our customer service team. Internally we specify this product at >20,000 cycles which we believe is realistic for repeatability of testing. Please be aware that abrasion testing alone is not a reliable indicator of the actual wear performance of fabrics. We're so confident in the durability of our products that we provide a robust 5 year guarantee (full details available). Please note that seam performance is dependent on seam construction and needle and thread type. We recommend that appropriate sewing advice be taken. Batch to batch variations in shade may occur within commercial tolerances. We reserve the right to alter technical specifications without notice. The Unregistered Design Rights and the Copyright in all designs are the exclusive property of Camira Fabrics Limited.

www.camirafabrics.com



Renewable
Pure New Wool



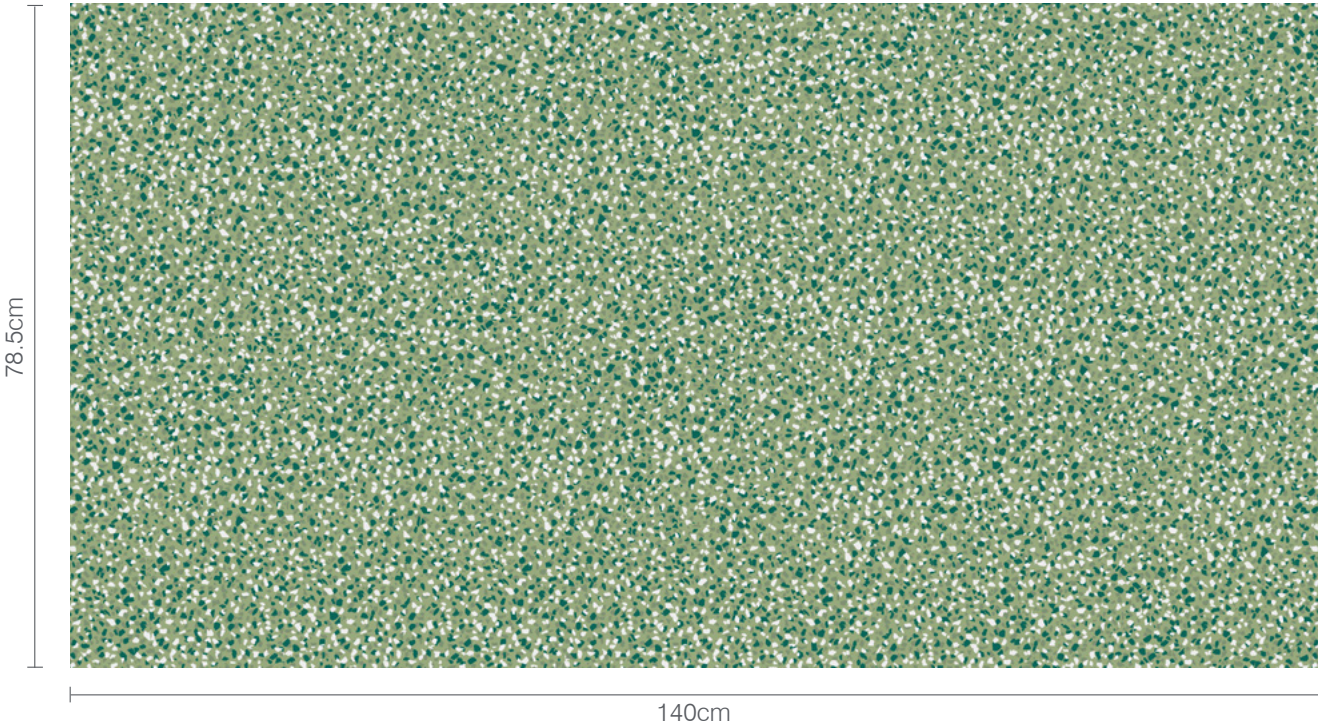
Scan für technische Daten in Deutsch
Scanner pour la spécification en français
Escaneen para obtener las especificaciones en español



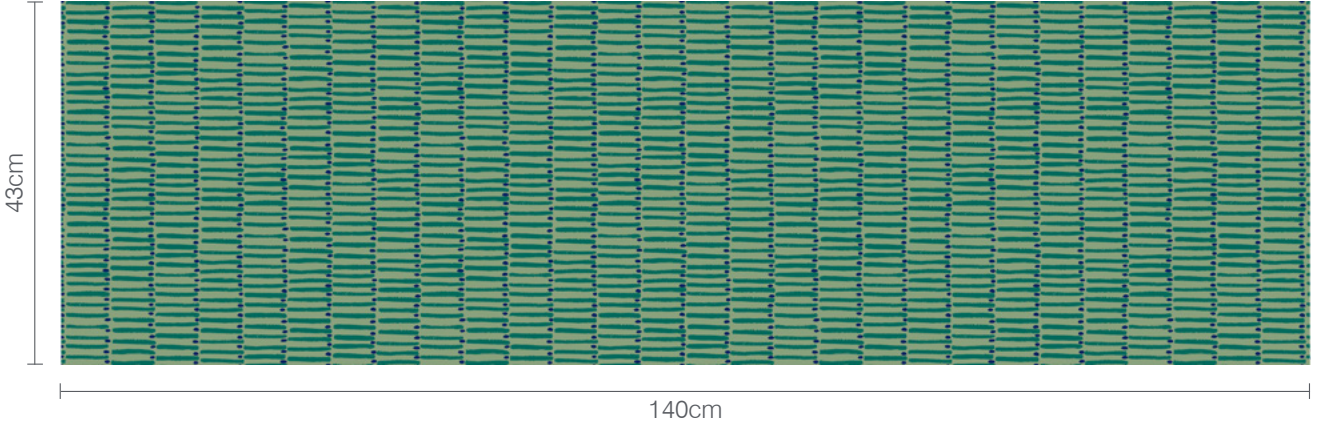
HPMC HPMC HPMC HPMC (TSR3)



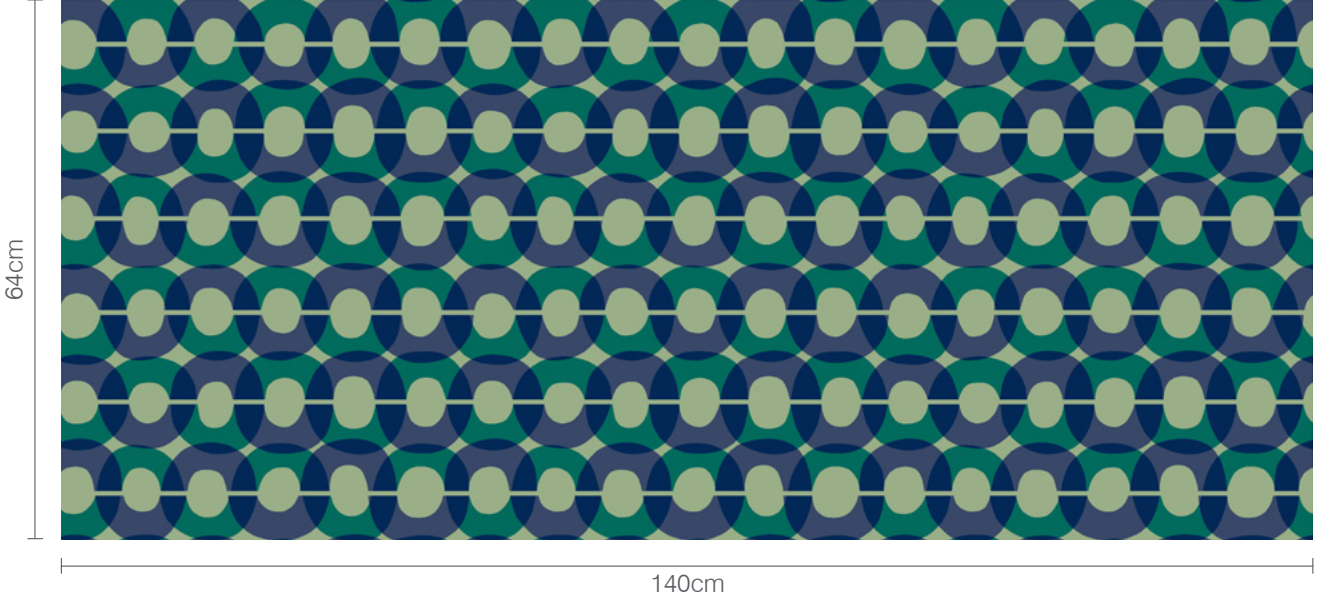
Speckle Pattern Repeat



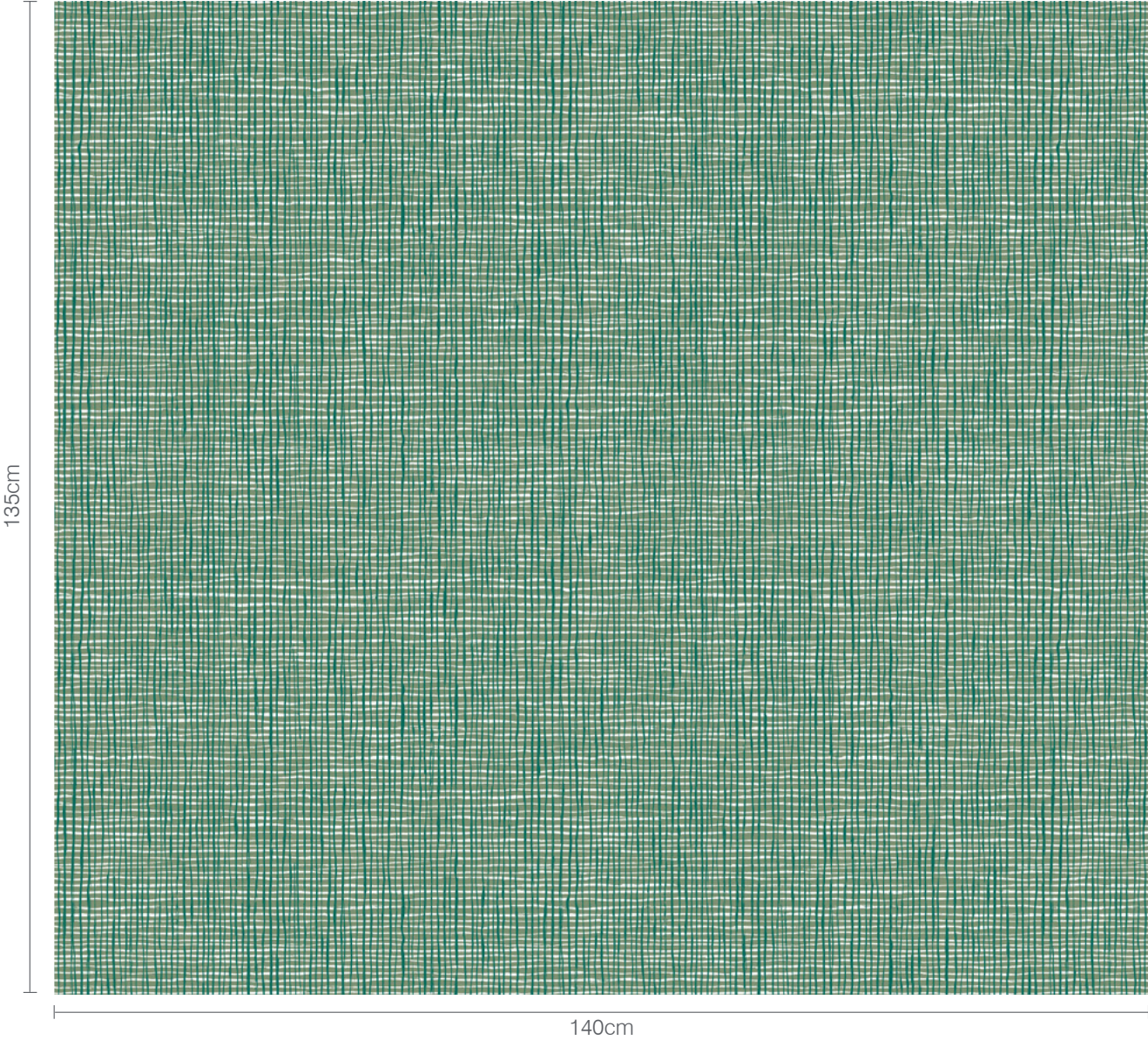
Dot Dash Pattern Repeat



Hula Pattern Repeat



Crosshatch Pattern Repeat



camira

www.camirafabrics.com

