

at work*
with
Camira

—

Sonus

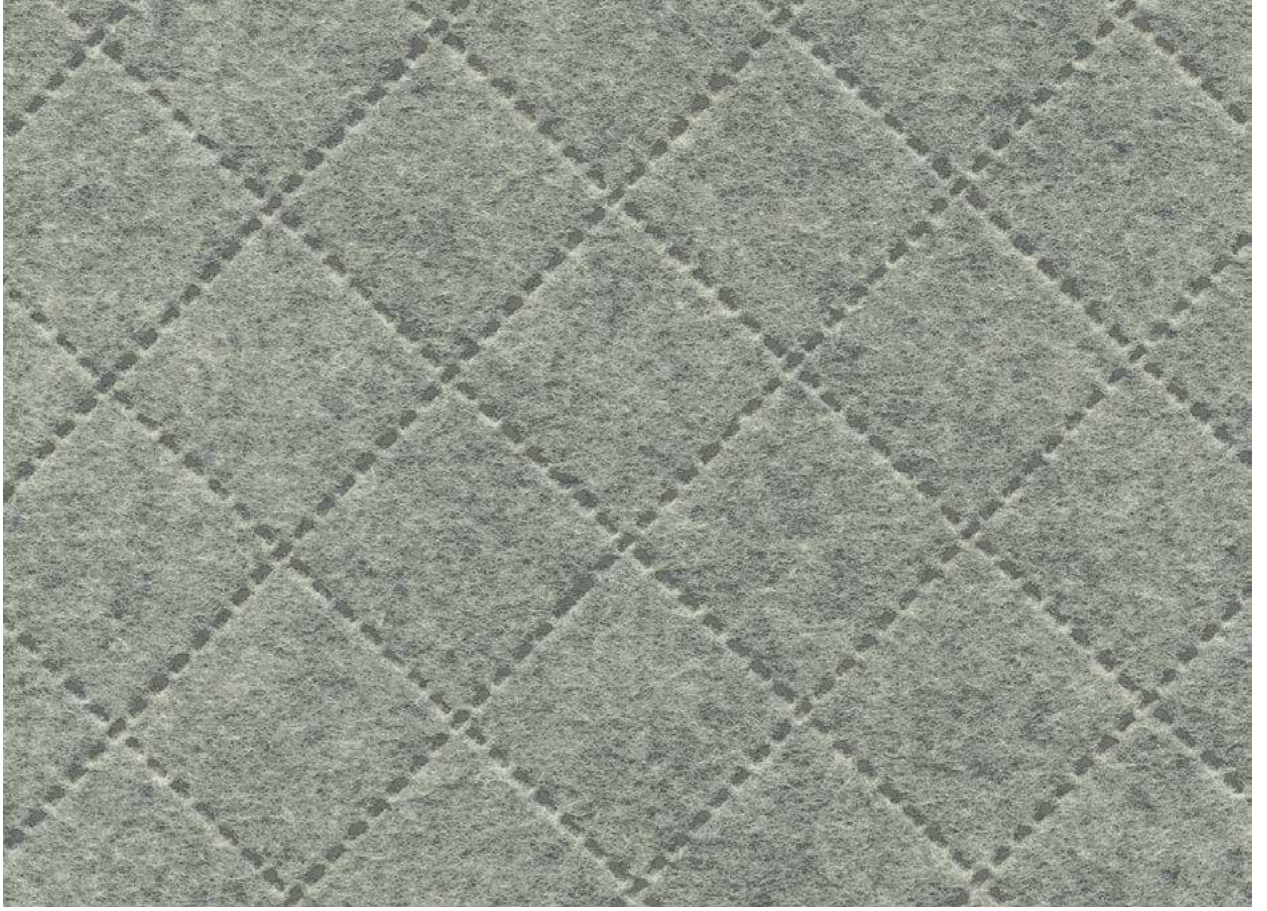
&

Sonus

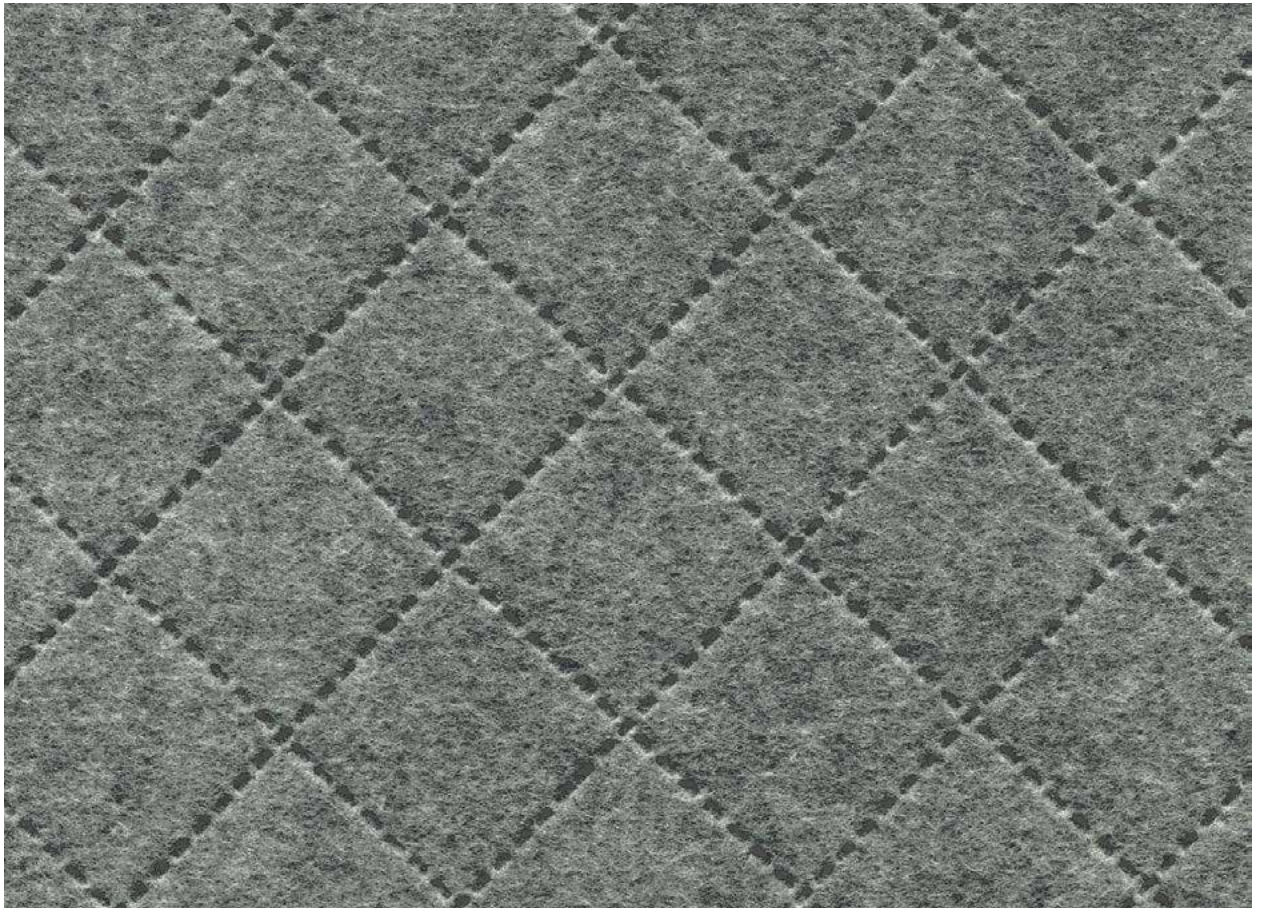
Etch

With a pressed felt finish and an appealing mélange effect, Sonus is the ideal accompaniment for a modern interior. It comes in a wide colour palette and its acoustically transparent properties make it the perfect enhancement for a wide range of applications across vertical surfaces. Sonus Etch brings added intrigue through its subtle surface embossed lattice design and is available in two complementary shades of grey.

Sonus & Sonus Etch



Scribe
SJR03



Carve
SJE04

Photographic fabric scans are not colour accurate. Always request actual fabric samples before ordering.



Voice
FHR02



Audio
FHR06



Beat
FHR03



Melody
FHR07



Soul
FHR13



Rap
FHU11



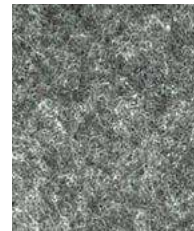
Song
FHR01



Pop
FHR09



Acoustic
FHR12



Music
FHU04



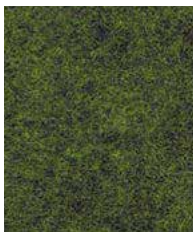
Chorus
FHR17



Lyric
FHU15



Classical
FHU14



Vocal
FHU08



Verse
FHR16



Amp
FHR05



Chime
FHU10

Sonus & Sonus Etch



Panels



Acoustic



Year guarantee



THE QUEEN'S AWARDS
FOR ENTERPRISE
SUSTAINABLE DEVELOPMENT
2015



THE QUEEN'S AWARDS
FOR ENTERPRISE
INTERNATIONAL TRADE
2016

Technical information

UK

Composition

Sonus FHR & Sonus Etch SJR codes:
72% Polyester, 18% Polyamide,
10% Viscose

Sonus FHU & Sonus Etch SJE codes:
57% Polyester, 43% Polyamide

Width

Sonus:

170cm minimum

Sonus Etch:

170cm roll width (155cm usable pattern)

Weight

200g/m² ±10% (340g/lin.m ±10%)

Flammability

EN 1021 - 1 (cigarette)

AS3837 & ISO5660

Sonus:

EN 13501-1 Adhered Class B, s1, d0

Sonus Etch:

EN 13501-1 Adhered Class C, s1, d0

EN 13501-1 Un-adhered, Class C, s1, d0

Note: Flammability performance is dependent on components used. Our certificates show what substrates have been used in our tests. For composite tests customers must ensure their complete furniture meets the necessary standards.

Light Fastness

Standard: 5 (ISO 105 - B02)

FHR05: 4 (ISO 105 - B02)

Acoustic Properties

Acoustically transparent, acoustic graphs available upon request.

Cleaning

Vacuum regularly. Professionally dry clean or wipe clean with a damp cloth.

Please note that seam performance is dependent on seam construction and needle and thread type. We recommend that appropriate sewing advice be taken.

Batch to batch variations in shade may occur within commercial tolerances. We reserve the right to alter technical specifications without notice. The Unregistered Design Rights and the Copyright in all designs are the exclusive property of Camira Fabrics Limited.

D

Zusammensetzung

Sonus FHR & Sonus Etch SJR codes:
72% Polyester, 18% Polyamid,
10% Viskose

Sonus FHU & Sonus Etch SJE codes:
57% Polyester, 43% Polyamid

Breite

Sonus:

170cm nutzbare Breite

Sonus Etch:

170 cm Rollenbreite
(155 cm nutzbares Muster)

Gewicht

200g/m² ±10% (340g/lf.d.m ±10%)

Feuersicherung

EN 1021 - 1 (Zigarettestest)

Sonus:

EN 13501-1 Adhered Class B, s1, d0

Sonus Etch:

EN 13501-1 Adhered Class C, s1, d0

EN 13501-1 Un-adhered, Class C, s1, d0

Bemerkung: Die Schwerentflammbarkeit hängt von den verwendeten Komponenten ab. Unsere Zertifikate zeigen auf, welche Substrate bei den Tests verwendet wurden. Bei Verbundtests muss sichergestellt sein, daß das komplette Möbel den entsprechenden Standards entspricht.

Lichtechtheit

Standard: 5 (ISO 105 - B02)

FHR05: 4 (ISO 105 - B02)

Akustische Eigenschaften

Akustisch durchlässig, akustische Messwerte auf Anfrage.

Reinigung

Regelmässig absaugen. Professionelle Trockenreinigung. Alternativ dazu mit einem feuchten Tuch abwischen.

Eine optimale Nahtausreissfestigkeit hängt von der Nahtfahne, der verwendeten Nadel und dem Näh-Garn ab. Wir empfehlen daher Näherweise durchzuführen.

Handelsübliche Farbabweichungen können auftreten und berechtigen nicht zur Reklamation. Wir behalten uns die Änderung technischer Spezifikationen vor. Die registrierten und nicht registrierten Urheberrechte der Dessinierungen sind ausschliessliches Eigentum der Camira Fabrics Limited.

F

Composition

Codes pour Sonus FHR et Sonus Etch SJR:
72% Polyester, 18% Polyamide,
10% Viscose

Codes pour Sonus FHU et Sonus Etch SJE:
57% Polyester, 43% Polyamide

Largeur

Sonus:

170cm minimum

Sonus Etch:

Largeur du rouleau : 170cms
(modèle utilisable : 155cms)

Poids

200g/m² ±10% (340g/m.l ±10%)

Flammabilité

EN 1021 - 1 (cigarette)

Sonus:

EN 13501-1 Adhered Class B, s1, d0

Sonus Etch:

EN 13501-1 Adhered Class C, s1, d0

EN 13501-1 Un-adhered, Class C, s1, d0

Notez: La performance de flammabilité dépend des composantes utilisées. Nos certificats indiquent les substrats utilisés dans nos tests. Pour les tests composites, les clients doivent s'assurer que leurs meubles complets satisfont aux normes nécessaires.

Solidité à la lumière

Standard: 5 (ISO 105 - B02)

FHR05: 4 (ISO 105 - B02)

Propriétés Acoustiques

Acoustiquement transparent, graphiques acoustiques disponibles sur demande.

Nettoyage

Aspirer régulièrement. Nettoyage à sec professionnel. Autrement, essuyer avec un tissu humide.

Veillez noter que la performance du joint dépend de sa construction ainsi que de l'aiguille et du type de fil utilisés.

Une variation de couleurs peut provenir (commerciallement tolérable). Nous réservons le droit de changer les spécifications techniques sans préavis. Les Droits de Conception non-enregistrés et les droits d'auteur de tous les motifs sont la propriété exclusive de Camira Fabrics Limited.

ES

Composición

Sonus FHR & Sonus Etch SJR códigos:
72% Poliéster, 18% Polyamida,
10% Viscosa

Sonus FHU & Sonus Etch SJE códigos:
57% Poliéster, 43% Polyamida

Ancho

Sonus:

170cm mínimo

Sonus Etch:

Ancho rollo 170cms
(aprovechamiento del diseño 155cms)

Peso

200g/m² ±10% (340g/lin.m ±10%)

Inflamabilidad

EN 1021 - 1 (cigarillo)

Sonus:

EN 13501-1 Adhered Class B, s1, d0

Sonus Etch:

EN 13501-1 Adhered Class C, s1, d0

EN 13501-1 Un-adhered, Class C, s1, d0

Nota: El rendimiento de la inflamabilidad depende de los componentes usados. Nuestros certificados muestran qué substratos se han usado en nuestros tests. Para tests compuestos nuestros clientes deben asegurar si sus muebles cumplen la normativa al uso.

Solidez a la luz

Standard: 5 (ISO 105 - B02)

FHR05: 4 (ISO 105 - B02)

Acústico Propiedades

Acústicamente transparente, gráficos disponibles bajo petición.

Limpieza

Limpiar con aspirador con regularidad. Limpiar en seco, o bien lavar con un paño húmedo.

Tenga en cuenta que el rendimiento de la costura depende de la construcción de la costura, además de la aguja y del tipo de rosca. Le recomendamos que se aconsejen para coser la costura.

Las variaciones de lote a lote en la sombra se puede producir dentro de tolerancias comerciales. Nos reservamos el derecho a efectuar modificaciones técnicas sin previo aviso. Los derechos sobre los diseños no registrados y los derechos de autor en todos los diseños son propiedad exclusiva de Camira Fabrics Limited.

Camira fabrics are
brought to Australasia
by Textilia

camira

at work*
with
Camira

AUSTRALIA
telephone: 1800 173209
facsimile: 1800 723264
web: atworkwithcamira.com
email: sales@atworkwithcamira.com
*at work is a brand of Textilia

at work*
with
Camira

NEW ZEALAND
telephone: +64 9 3685768
facsimile: +64 9 3685769
web: textilia.co.nz
email: info@textilia.co.nz
*at work is a brand of Textilia