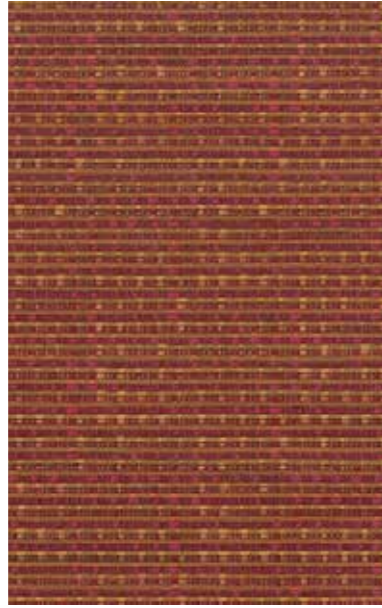


Crypton Options - Upholstery



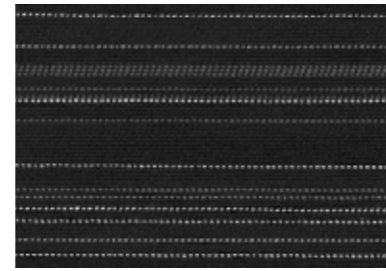
Hex - Terra



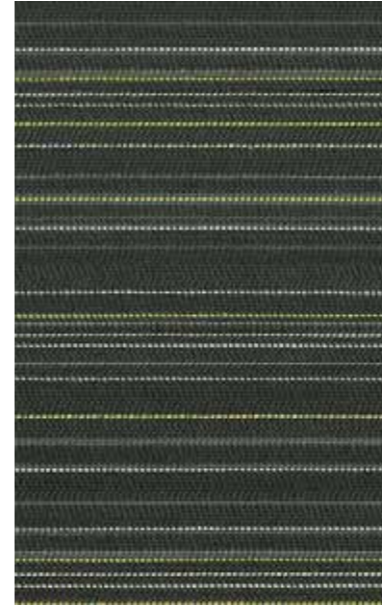
Brooklyn - Russett



Hex - Steel



Glide - Jet



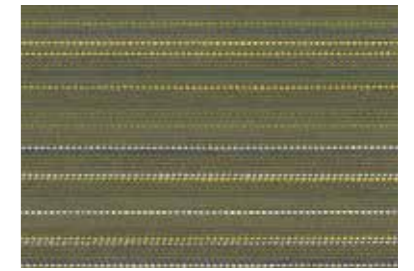
Glide - Olive



Geo - Olive



Brooklyn - Mist



Glide - Moss



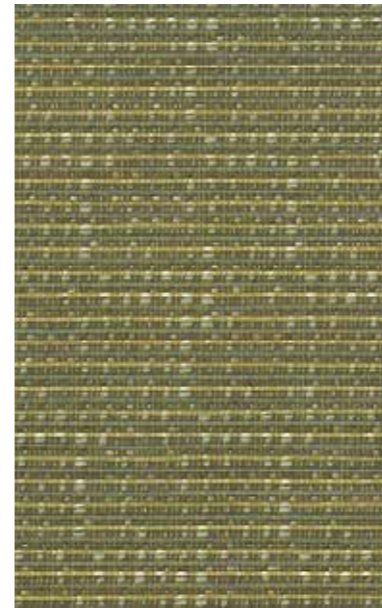
Glide - Terra



Geo - Blaze



Glide - Blaze



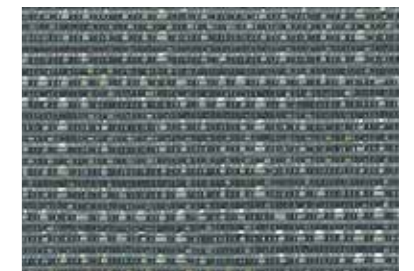
Brooklyn - Lichen



Glide - Mist



Hex - Moss



Brooklyn - Cadet Blue



Brooklyn - Jet



Hex - Dust



Hex - Jet



Glide - Dust



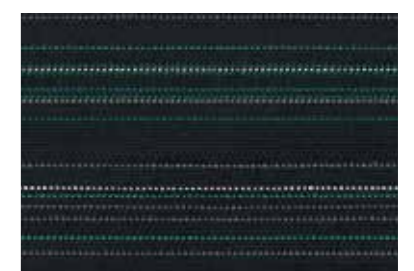
Geo - Teal



Hex - Midnite



Geo - Midnite



Glide - Midnite

Brooklyn

Width	137cm
Composition	60% Recycled Polyester, 40% Acrylic CRYPTON
Repeat	Nil H, Nil V
Roll size	50m approx
Weight	470g per lineal metre
Use	Upholstery
Abrasion	40,000 + Martindale Rubs
Fire Test	AS1530 Part 3, NFPA 260, UFAC Class 1, Cal 117 Sect E
Qualities	Stain/Bacterial/Fungal/Moisture Resistant/Sanitized

Geo

Width	137cm
Composition	54% Recycled Polyester, 46% Polyester CRYPTON GREEN
Repeat	6cm H, 6.9cm V
Roll size	54m approx
Weight	500g per lineal metre
Use	Upholstery
Abrasion	50,000 Wyzenbeek Double Rubs
Fire Test	AS1530 Part 3, NFPA 260, UFAC Class 1, Cal 117 Sect E
Qualities	Stain/Bacterial/Fungal/Moisture Resistant/Sanitized

Glide

Width	137cm
Composition	100% Recycled Polyester CRYPTON GREEN
Repeat	Nil H, 7.3cm V
Roll size	54m approx
Weight	500g per lineal metre
Use	Upholstery
Abrasion	100,000 Wyzenbeek Double Rubs
Fire Test	AS1530 Part 3, NFPA 260, UFAC Class 1, Cal 117 Sect E
Qualities	Stain/Bacterial/Fungal/Moisture Resistant/Sanitized

Hex

Width	137cm
Composition	100% Recycled Polyester CRYPTON GREEN
Repeat	12cm H, 19.3cm V
Roll size	54m approx
Weight	500g per lineal metre
Use	Upholstery
Abrasion	50,000 Wyzenbeek Double Rubs
Fire Test	AS1530 Part 3, NFPA 260, UFAC Class 1, Cal 117 Sect E
Qualities	Stain/Bacterial/Fungal/Moisture Resistant/Sanitized

Colour Variations: All textiles are subject to some colour variation. Fabric supplied to customer order will be within commercial tolerance.

CTA Performance Rating: Tests conducted by independent testing laboratories indicate that BROOKLYN, GEO, GLIDE and HEX, met or exceeded the performance guidelines for Heavy Duty Commercial Use as determined by the CTA (Commercial Textile Association of Australia and New Zealand).

Fabric Care: Vacuum regularly. Liquid spills—simply wipe with a clean cloth. Solid or dry stains—remove the dry stain by scraping off as much as you can. If stain is persistent use a wet cloth cleaning detergent. Wet cleaning—make a paste using mild detergent. Apply to stain. Leave for at least one minute then scrub the area with a clean nylon brush. After scrubbing the area needs to be rinsed thoroughly using a sponge and clean water. Please note: bleach can be used in a 10:1 dilution and must be completely rinsed out.

Tel: 1800 173 209 / Fax: 1800 723 264 / Email: sales@atworkwithcamira.com / Web: atworkwithcamira.com /
*at work is a brand of Textilia



Commercial Textile Association
of Australia & New Zealand Limited.



Commercial Textile Association
Performance Rating.



Crypton Green



Crypton

at work*

Crypton
Options

Office Commercial,
Healthcare,
Hospitality,
Education